

# A Comparative Study of Transient Flow through Cerebral Aneurysms using CFD

S.M. Abdul Khader, Md. Zubair, Raghuvir Pai. B, V.R.K. Rao, S. Ganesh Kamath

**Abstract**— The recent advances in computational fluid dynamics (CFD) can be useful in observing the detailed hemodynamics in cerebral aneurysms for understanding not only their formation and rupture but also for clinical evaluation and treatment. However, important hemodynamic quantities are difficult to measure in vivo. In the present study, an approximate model of normal middle cerebral artery (MCA) along with two cases consisting broad and narrow saccular aneurysms are analyzed. The models are generated in ANSYS WORKBENCH and transient analysis is performed in ANSYS-CFX. The results obtained are compared for three cases and agree well with the available literature.

**Keywords**—Aneurysms, ANSYS – CFX, CFD, Pulsatile flow.

## I. INTRODUCTION

COMPUTATIONAL haemodynamics has become a powerful and desirable tool in investigation of cardiovascular diseases such as atherosclerosis and aneurysm, which are influenced by hemodynamic factors [1]. Aneurysms are local dilatations or ballooning of the vessel wall and most commonly occur in the base of the brain (cerebral aneurysm), or near the aorta (aortic aneurysm). These aneurysms most often are caused by arteriosclerotic diseases, infections, head injuries, alcohol and smoke abuse and due to many other reasons [2]. In the present study, main emphasis is on cerebral aneurysms especially in MCA and in circle of Willis. The most serious complications occur when aneurysm ruptures due to intra cranial bruise, subsequent recurrent bleeding, hydrocephaly and spasms in brain vessels. Aneurysms are most frequently diagnosed using visualization modalities such as CT scanning and MR imaging. Upon detection, the risk of rupture versus the risk of treatment needs to be evaluated. The main criterion in deciding whether an aneurysm needs to be

treated is the aneurysm size [3]. Treatment options are endovascular coil embolization, surgical clipping and more recently stenting. Coil embolization consists of filling the aneurysm with a platinum coil to decrease blood circulation and promote thrombus formation in the aneurysm [4]. This procedure may be preceded by stenting of the parent artery, especially in wide-necked aneurysms. Clipping consists of placing a clip around the aneurysm neck, preventing blood from flowing into the aneurysm. The choice of treatment depends on the individual risk assessment of each aneurysm, including factors like the patient's condition and characteristics of the aneurysm like location, size and shape.

Aneurysm hemodynamics is contingent on the aneurysm geometry and its relation to the parent vessel, its volume and aspect ratio (depth/neck width) [5]. The geometry of the aneurysm can be described by several characteristic dimensions like the orifice size ( $l$ ), the neck width ( $n$ ), the dome width ( $w$ ), the dome semi-axis height( $s$ ) and the dome height ( $h$ ) as shown in the fig.1. The characterization of the shape of an aneurysm can be done by determining ratios like  $w/n$ ,  $h/n$ ,  $w/h$  and  $h/s$ .

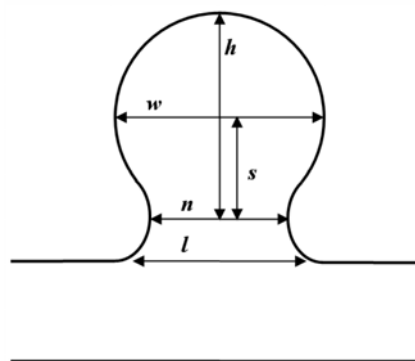


Fig. 1 Saccular aneurysm dimensions

S. M. Abdul Khader is with the Mechanical Engineering Department, Manipal Institute of Technology, Manipal University, Manipal – 576104, INDIA. (Phone: +91-0820-2925465; e-mail: smak.quadri@gmail.com).

Md.Zubair is a Ph.D. student at School of Aeronautical Engineering, University Sains Malaysia, Nebong Tebal, Penang-14300, Malaysia.(e-mail: mechzubair@gmail.com)

Dr. Raghuvir Pai. B is with the Mechanical Engineering Department, Manipal Institute of Technology, Manipal University, Manipal – 576104, INDIA. (Phone: +91-0820-2925465; e-mail: raghuvir.pai@gmail.com).

Dr. V.R.K. Rao is with the Radiodiagnosis and Imaging Department, Kasturba Medical College, Manipal University, Manipal – 576104, INDIA. (Phone: +91-0820-2922074; e-mail: vrk.rao@manipal.edu).

Dr. Ganesh Kamath is with the Cardio Vascular and Thoracic Surgery Department, Kasturba Medical College, Manipal University, Manipal – 576104, INDIA. (Phone: +91-0820-2922313; e-mail: sevagur@hotmail.com).

The pathogenesis and causes for expansion and eventual rupture of saccular aneurysms are not clear. It is generally accepted that unique structural features of the cerebral vasculature contribute to the genesis of these aneurysms. A typical saccular aneurysm has a very thin tunica media and the internal elastic lamina is absent in most cases. Thus, the arterial wall is composed of only intima and adventitia. Consequently, hemodynamics factors such as blood velocity, wall shear stress, pressure, particle residence time and flow impingement, play important roles in the pathogenesis of aneurysms and thrombosis. These factors play an important

role in the outcome of endovascular and surgical treatments as measuring these hemodynamic quantities in vivo is difficult and various modeling approaches using CFD have been considered in the past.

The systematic CFD studies provide the thorough understanding of the influence of variations in the boundary conditions on the biologically important haemodynamics parameters [6]. Also such a study would help vascular surgeons to understand flow patterns associated with vascular pathology as well as to predict the hemodynamic changes induced by surgical procedures.

## II. METHODOLOGY AND MODEL DESCRIPTION

### A. Governing equation of CFD

The blood flow in cerebral arteries is assumed to be Newtonian, laminar and it is governed by the incompressible flow equations consisting of continuity and Navier–Stokes equations [1,2,3].

$$\nabla \cdot u = 0 \quad (1)$$

$$\rho \left( \frac{\partial u}{\partial t} + u \cdot \nabla u \right) = -\nabla p + \mu \nabla^2 u \quad (2)$$

Where  $\rho$  is the density,  $p$  is the pressure,  $\mu$  is the viscosity and  $u$  is the velocity.

### B. Model Description

The length of the MCA widely ranges from 12 to 28 mm with a mean of 20 mm and the diameter at its origin ranges from 2.5 to 4 mm with a mean of 3.35 mm [7]. In the present study, the length and diameter of the normal MCA model is considered to be 18mm and 3mm respectively as shown in fig.2. The broad neck MCA aneurysm shown in fig.3 has ratios  $w/n=2.5$ . The ratio  $w/n = 1.5$  is chosen for narrow neck MCA aneurysm as shown in fig.4. The 3D models are generated in ANSYS WORKBENCH-11.0 and meshed models are later transferred to ANSYS-CFX for further transient analysis [9].

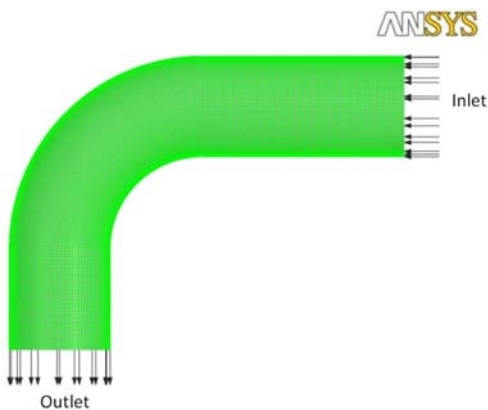


Fig. 2 Normal MCA

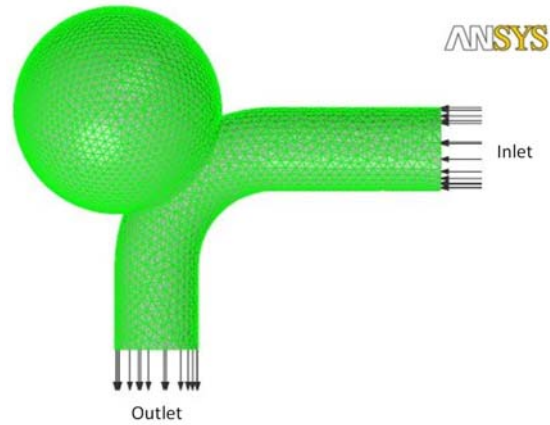


Fig. 3 Broad neck MCA aneurysm

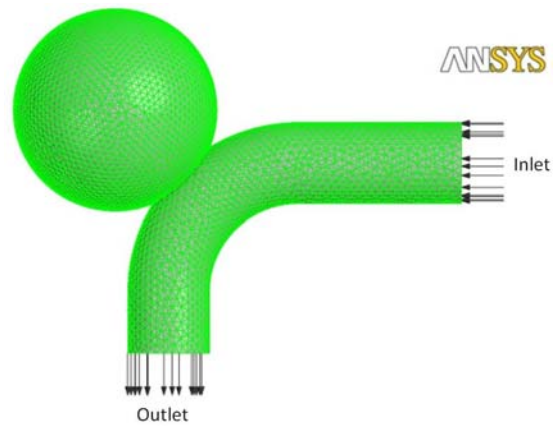


Fig. 4 Narrow neck MCA aneurysm

## III. NUMERICAL ANALYSIS

In the present analysis, the flow is considered to be laminar, incompressible and Newtonian [1, 2]. The boundary conditions applied are: (i) a time dependent uniform velocity at inlet, (ii) a zero normal traction at outlet and (iii) no slip boundary conditions at the vessel walls [1,8,10]. The normal MCA is discretized into 300000 hexahedral elements, while narrow and broad neck MCA aneurysm are discretized into 137000 and 104000 tetrahedral elements [9].

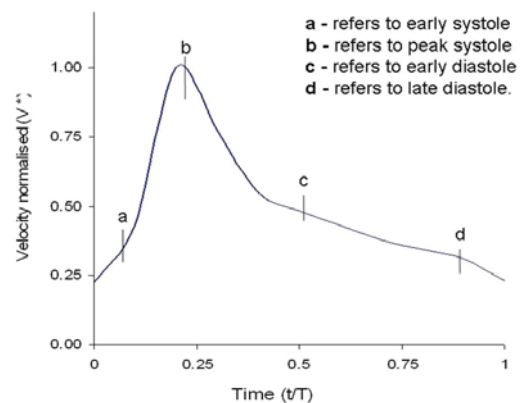


Fig. 5 Inlet velocity waveform

The arterial wall is assumed to be rigid and transient analysis is performed for four pulse cycles and each pulse cycle is divided into fifty time steps. The blood density and viscosity are specified as  $1060 \text{ kg/m}^3$  and  $0.004 \text{ Ns/m}^2$  respectively [8, 10]. The normalized inlet velocity waveform shown in fig.5 and other prescribed boundary conditions remains same for all the three cases.

#### IV. RESULTS AND DISCUSSION

The computed results are compared for three cases viz. normal MCA model, Broad Neck Aneurysm (BNA) model and Narrow Neck Aneurysms (NNA) model considering velocity profile, pressure contour and wall shear stress. The flow contour is compared at specified instants in a pulse cycle as highlighted in fig.5 and it is found to be maximum during the peak systole when inflow is maximum. It is observed that the flow is almost stagnant in sac for both BNA and NNA models for entire pulse cycle especially at the center [2,8]. Because of the bend, the flow in downstream is more turbulent leading to the formation of eddies along inner side wall for entire pulse cycle. The velocity contours at peak systole is shown in fig.6, fig.7 and fig.8 and it is observed that the formation of aneurysm has deviated the normal flow path. The extent of sac filling is more in BNA than in NNA because of the large neck size as shown in fig.7 and fig.8.

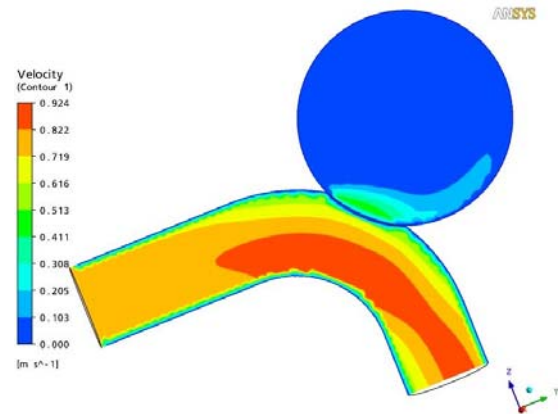


Fig. 8 Velocity contour in NNA model (Peak systole)

The pressure contours are compared which is maximum at peak systole for BNA and NNA model as shown in the fig. 9 and fig.10 respectively [11]. It is observed that the difference in sac pressure is exhibited to be more in NNA than in BNA. The effect is more localized in later and spread across the whole dome in former, because of the broad neck, the stagnation of the flow in sac is less and the neck region is more pressurized.

Open Science Index, Biomedical and Biological Engineering Vol:3, No:12, 2009 publications.waset.org/5319.pdf

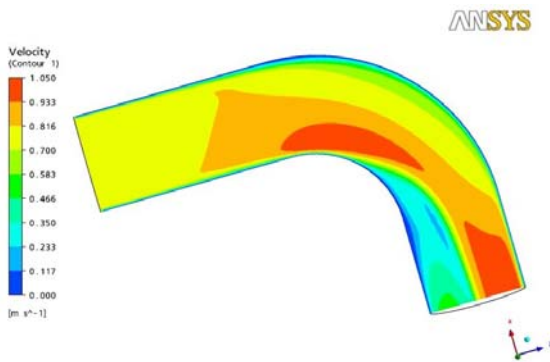


Fig. 6 Velocity contour in normal model (Peak systole)

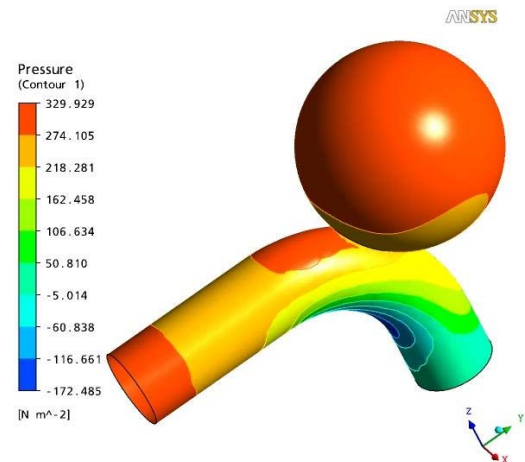


Fig. 9 Pressure contour along wall in NNA model (Peak systole)

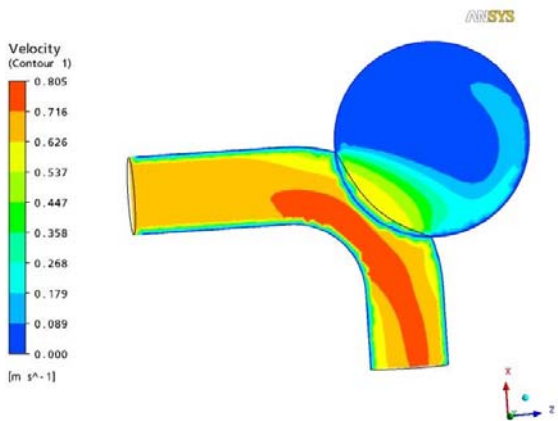


Fig. 7 Velocity contour in BNA model (Peak systole)

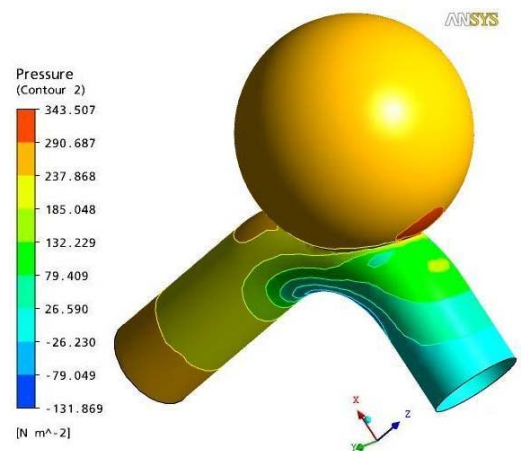


Fig.10 Pressure contour along wall in BNA model (Peak systole)

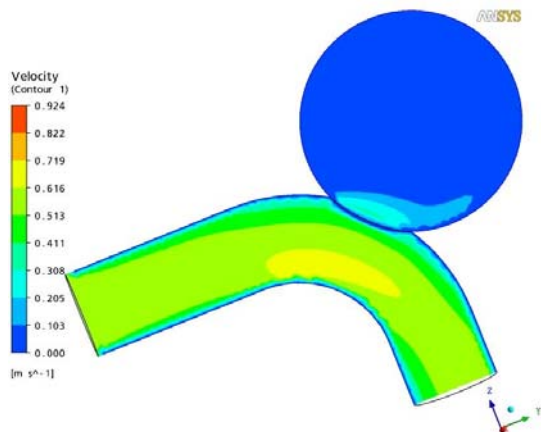


Fig. 11 Velocity contour in NNA model (early diastole)

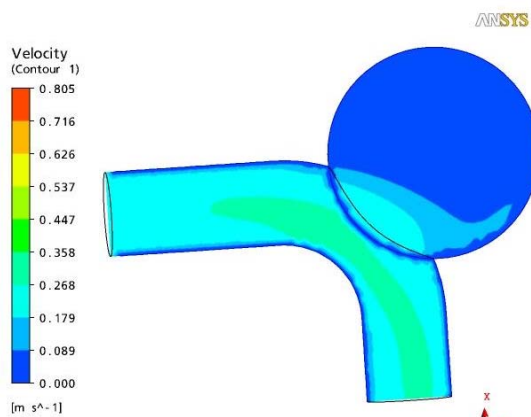


Fig. 12 Velocity contour in BNA model (early diastole)

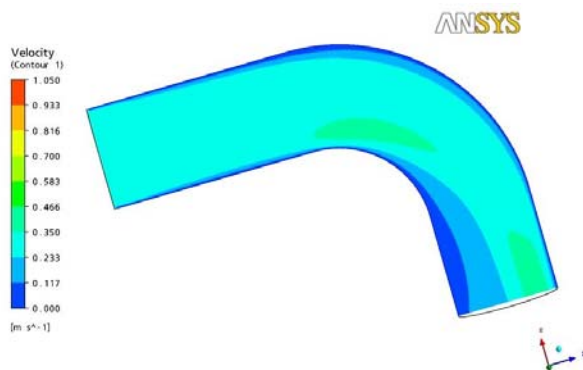


Fig.13 Velocity contour in normal model (early diastole)

Fig. 11 and fig.12 depicts the velocity contour during early diastole for NNA and BNA models. The flow pattern changes abruptly leading to turbulence in downstream. The flow in the most part of the sac appears to be stagnant and filling of sac diminishes as the neck size decreases. Also the time required for exit of the flow from the sac is less in BNA than in NNA. Due to the flow deceleration, the extent of the formation of eddies is high in normal as shown in fig.13 than both the abnormal models and it tends to increase as it reaches the end part of the pulse cycle.

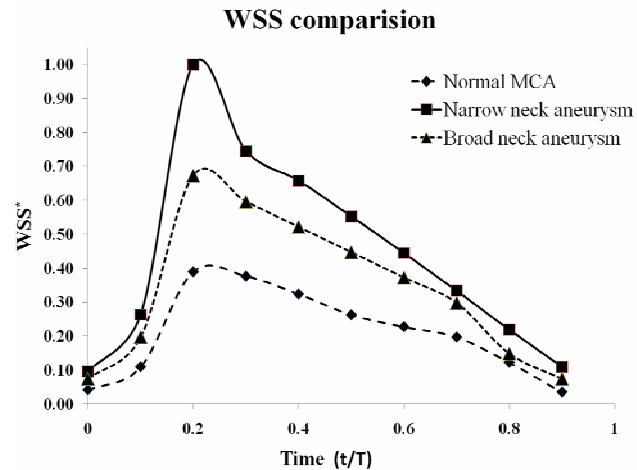


Fig. 13 Normalized WSS comparison

The significance of the evaluation of Wall Shear Stress (WSS) is high in case of saccular aneurysms, because the entire haemodynamics is altered as it varies with time due to pulsatility and the maximum value occurs generally at peak systole [11, 12]. The normalized WSS is compared for the three cases as shown in fig.14. It is observed that the variation of WSS is highest in NNA model followed by BNA and normal model and the location is not constant and varies with pulse cycle. In case of normal model, the maximum WSS is observed towards the inner bend during peak systole and it decreases with declaration of pulse. In case of BNA and NNA models also, the maximum WSS is observed along the bend. The nature of variation of WSS shows the pulsatile behavior.

## V. CONCLUSIONS

The transient analysis is performed on normal MCA, NNA model and BNA model to exhibit the difference in flow pattern due to the variation in geometry. The results show that the maximum flow is observed at peak systole in all the three models. The sac filling is observed to be maximum in BNA model than NNA model and flow is nearly stagnant in the dome. The dome of NNA model is more pressurized than BNA model. During the flow deceleration, the formation of eddies is common in downstream in all the three cases. The comparison of WSS suggests that the maximum WSS is observed to be in NNA model than in BNA model.

In the present study, the numerical simulations results are compared for the changes in flow behavior for normal and diseased cases for an approximated model and agree well with the clinically observed results. In order to accomplish the realistic physiological simulations, the present methodology could be extended to realistic models. The generation of such models is possible by considering the images obtained from the various imaging modalities.

## VI. NOMENCLATURE

MCA	Middle Cerebral Artery
BNA	Broad neck aneurysm

NNA Narrow neck aneurysm  
WSS \* Normalized Wall Shear Stress  
=  $WSS_t / WSS_{max}$   
WSS<sub>max</sub> Maximum WSS in time period, T  
WSS<sub>t</sub> WSS at time, t

#### REFERENCES

- [1] R. Torii, M. Oshima, T. Kobayashi, K. Takagi and T.E. Tezduyar, "Magnitude and Role of Wall Shear Stress on Cerebral Aneurysm: Computational Fluid Dynamic Study of 20 Middle Cerebral Artery Aneurysms", *Stroke*, vol.35, pp. 2500-2505, 2004
- [2] C.W.C. Stasse, "Development of a Computational Fluid Dynamics pipeline for patient-specific cerebral aneurysms", Master Thesis, Dept. of Biomedical Eng., Eindhoven University of Technology, August 2007.
- [3] Alvaro Valencia, Francisco Solis, "Blood flow dynamics and arterial wall interaction in a saccular aneurysm model of the basilar artery", *Computers and Structures*, vol. 84, pp. 1326-1337, 2006.
- [4] Juan R. Cebal, Mónica Hernández, Alejandro F. Frangi, "Computational analysis of blood flow dynamics in cerebral aneurysms from CTA and 3D rotational angiography image data", presented at 2003 International Congress on Computational Bioengineering, España.
- [5] Luciana Parlea, Rebecca Fahrig, David W. Holdsworth, and Stephen P. Lownie, "An Analysis of the Geometry of Saccular Intracranial Aneurysms", *AJNR Am J Neuroradiol*, vol.20, pp.1079-1089, June/July 1999.
- [6] Francisco A, Jagannath R, Ismail B, Ansaar T, "Quantification of Discretization error in Wall Shear Stress calculations for Aneurysmal flow using CFD", in *Proceedings of ASME Fluid Engineering Division Summer Conference*, Jacksonville, Florida, USA, August 10-14, 2008.
- [7] S. Balaji Pai, R.G Varma, R.N. Kulkarni, "Microsurgical Anatomy of the Middle Cerebral Artery", *Neurology India*, vol. 53(2), pp.186-190, June 2005.
- [8] R. Torii, M. Oshima, T. Kobayashi, K. Takagi and T.E. Tezduyar, "Influence of Wall Elasticity in Patient-Specific Hemodynamic Simulations", *Computers & Fluids*, vol. 36, pp. 160-168, 2007.
- [9] ANSYS Inc., "ANSYS Release 11.0 Documentation", ANSYS Company, Pittsburgh, PA, 2008.
- [10] T.E. Tezduyar, S. Sathe, M. Schwaab and B.S. Conklin, "Arterial Fluid Mechanics Modeling with the Stabilized Space-Time Fluid-Structure Interaction Technique", *International Journal for Numerical Methods in Fluids*, vol.57 (5), pp.601-629, June 2008.
- [11] R. Torii, M. Oshima, T. Kobayashi, K. Takagi and T.E. Tezduyar, "Finite Element Simulation of Blood flow in Cerebral Artery", *Comput. Methods Appl. Mech. Engrg.*, vol. 191, pp. 661-671, 2001.
- [12] R. Torii, M. Oshima, T. Kobayashi, K. Takagi and T.E. Tezduyar, "Fluid-structure interaction modeling of blood flow and cerebral aneurysm: Significance of artery and aneurysm shapes", *Comput. Methods Appl. Mech. Engrg.*, to be published.

S.M. Abdul Khader was born in Bhadravathi in the year 1983 on 5<sup>th</sup> August. He has graduated in Mechanical Engineering in 2005 from Visweswariah Technological University, Karnataka. He completed his Masters Degree in Computer Aided Mechanical Design and Analysis in 2007.

He joined Manipal Institute of Technology, Manipal as Lecturer in Department of Mechanical and Manufacturing Engineering in 2007 and currently pursuing PhD in the area of Fluid-Structure Interaction.

His areas of interest are Fluid-Structure Interaction, Computational Biofluid Mechanics, CFD, Structural Analysis and Machine Design.

Md. Zubair was born in Manipal on 21-10-1980. He has awarded M.Tech degree in the year 2007 in Thermal Engineering from Kuvempu University, Karnataka.

He has around two years of Industrial experience. He was employed at Origin Mouldings (P) Ltd., Bangalore (2003) as Project Engineer, worked with WaveAxis (P) Ltd., Bangalore (2007) as CFD Engineer. He also worked for a short period of one year (2008) as Lecturer in Department of Mechanical

and Manufacturing Engineering, Manipal Institute Technology, Manipal, India.

Currently he is pursuing PhD. at University Sains Malaysia, Nebong Tebal, Penang, Malaysia-14300. His research interests include nasal flow analysis, Thermal management of Electronic Systems and CFD.

Dr. Raghuvir Pai. B born in Ballabhat on 26/03/1964 had his Bachelors in Mechanical Engineering in 1982 from the University of Mysore. In 1988, he went to the Indian Institute of Technology, Kharagpur and completed his Doctoral degree in Tribology. From February 1995 to February 1996, he had worked as a Department of Science and Technology (Government of India), BOYSCAST Postdoctoral research fellow at Cranfield University, England. He has research and teaching experience of 2 years (2000-2002) at Queensland University of Technology, Brisbane, Australia.

He was the Head of Department Mechanical and IP Engineering at MIT in 2004. In February 2005, he was promoted as the Joint Director of MIT Manipal. In August 2006 he was promoted as the Director of the International Centre for Applied Sciences, Manipal University, Manipal. Currently he is the Chairperson, Engineering, Manipal University, Dubai.

Dr. Pai has published 90 research papers in Journals, International and National conferences. He has supervised 04 Ph.D. students in the area of Water Lubricated Bearings, Externally adjustable bearings and Tri-taper bearings and Tribology of machining metal matrix composites. He was a principal investigator for research projects by Philips, Bharat Heavy Electricals and GE JFWTC Global Research Centre, Bangalore. He has conducted more than 10 short courses in the field of Tribology.

Dr. V.R.K. Rao was born in Anapalle on 13<sup>th</sup> July 1948. He obtained his M.B.B.S degree in 1970 from Andhra University, post-graduate in D.M.R.D from Delhi University in 1974 and M.D. Radiology in 1977 from Banaras Hindu University. He has research and teaching experience of thirty one years in field of Diagnostic and Interventional Radiology.

He started his career as Asst. Prof. in Shree Chitra Tirunal Institute for Medical Sciences and Technology, Thiruvananthapuram from 1977-1982, Associate Prof. from 1982-1987 and Prof. and Head from 1987-1993. Later he moved to Al-Jazeera and Central Hospitals, Abu Dhabi as Head of Radiology Department and worked there till 2005. He had his short stay as Head of Radiology Department in Kerala Institute of Medical Sciences, Thiruvananthapuram till 2006 and shifted to Kasturba Hospital, Manipal as the Head of Radiology and Diagnostic Imaging.

He has over 88 publications to his credit and has presented more than 110 lectures at various conferences and seminars. He is a member of various National and International associations in field of Neurology, Neuroradiology and Interventional Radiology and has many awards and Honours to his credit. His research areas are development of suitable embolic agents for endovascular treatment, Radiology Information and Management Systems and Development of endovascular prostheses.

Dr.S. Ganesh Kamath was born in 07/07/1960 and finished his under graduation in Medicine in 1984 in Kasturba Medical College, Mangalore. From the same institute, he completed his post-graduation in General Surgery (M.S.) in 1989. He secured the post-doctoral degree of MCh in Cardiovascular Thoracic Surgery in 1992 from Kasturba Medical College, Manipal.

He is the Head of Department of Cardio-Vascular and Thoracic Surgery in KMC, Manipal from 2002 onwards and has 17yrs of experience of Post MCh teaching experience. His main areas of interest are adult surgery, thoracic and vascular surgery.