

# Grey Prediction Based Handoff Algorithm

Seyed Saeed Changiz Rezaei, Babak Hossein Khalaj

**Abstract**— As the demand for higher capacity in a cellular environment increases, the cell size decreases. This fact makes the role of suitable handoff algorithms to reduce both number of handoffs and handoff delay more important. In this paper we show that applying the grey prediction technique for handoff leads to considerable decrease in handoff delay with using a small number of handoffs, compared with traditional hysteresis based handoff algorithms.

**Keywords**— Cellular network, Grey prediction, Handoff.

## I. INTRODUCTION

WIRELESS communication systems are the best candidates to facilitate the communication from anywhere with any type of information, and always best connected (ABC) concept, where a person is allowed to choose the best available access networks and devices at any point in time([1], [2]). Here, the role of cellular systems becomes more important, since they are capable to enhance the network capacity significantly.

The projected market growth in personal communication network (PCN) has resulted in reduced cell sizes, over time. Cell size reduction, reduces the coverage area of the base station (BS), which means that a channel can be reused over a smaller distance with a subsequent increase in its reuse factor, and this makes handoff role really critical in future wireless networks ([2]).

Traditional handoff algorithms are as follows ([3]):

1. *Handoff based on Relative Signal Strength*: in which the strongest received BS is selected at all times.([4])
2. *Handoff based on Relative Signal Strength with threshold*: in which a user hands over only if the current signal is sufficiently weak (less than a threshold) and the other is the stronger of the two.
3. *Handoff based on Relative Signal Strength with hysteresis*: in which a user hands over if the new BS is sufficiently stronger (by a hysteresis margin) than the current one.
4. *Handoff based on Relative Signal Strength with hysteresis and threshold*: in which a user hands over to a new BS only if the current signal level drops below a

threshold and the target BS is stronger than the current one by a given hysteresis margin.

5. *Handoff based on Prediction techniques*: in which the handoff decision is made on the expected future value of the received signal.([5])
6. The application of nonstandard approaches to handoff mechanism such as neural networks, fuzzy logic, hypothesis testing, and dynamic programming. ([6], [7], [8])

As the cell size shrinks to increase capacity, the number of cell boundary crossings increases, and consequently the number of inter-cell handoff is also increased which is not favorable. If the aforementioned traditional handoff algorithm based on averaging is used, large averaging window and hysteresis is needed to lower the number of handoffs. However, this leads to excessive delay in handing off which consequently causes large call dropping probability. Here we show that applying the powerful grey prediction tool for handoff can minimize two contradictory parameters i.e. expected number of handoffs and handoff delay simultaneously.

This paper is organized as follows. In section 2 grey prediction is reviewed. In section 3 handoff algorithm based on grey prediction is introduced. Section 4 compares the ability of Grey prediction based handoff algorithm with that of handoff algorithm based on averaging in order to satisfy the requirements of future networks i.e. minimizing both handoff delay and number of handoffs. Section 5 concludes the paper.

## II. GREY PREDICTION THEORY

Grey theory was proposed by J. L. Deng in 1982 [9]. A system is called “white” if all the information of the system is known. On the other hand, a system is called “black” if we do not know anything about it. Thus a grey system is the one which is partially known. Grey prediction power comes from its ability to predict the future value with only a few data.

Grey prediction based on grey model (GM) has three basic operations: accumulated generating operation (AGO), inverse accumulated generating operation (IAGO) and grey modeling. The GM (1, 1) model is the most commonly used model. The first 1 in GM(1,1) means that there is only one variable, and the next 1 means that the first order grey differential equation is used to construct the model.

The grey prediction algorithm based on GM (1, 1) model is as follows:

Consider the non negative data:

$$u^0 = [u^{(0)}(1), u^{(0)}(2), u^{(0)}(3), \dots, u^{(0)}(n)] , \text{ where } n \geq 4.$$

Seyed Saeed Changiz Rezaei is a master student of the Electrical Engineering Department, Sharif University of Technology, Tehran, IRAN (e-mail: schangiz@mehr.sharif.edu).

Babak Hossein Khalaj is with the Electrical Engineering Department, Sharif University of Technology, Tehran, IRAN (e-mail: khalaj@sharif.edu).

Then the GM (1, 1) is:

$$u^{(0)}(k) + aZ^{(1)}(k) = b, \quad k = 1, 2, 3, \dots, n$$

where “a” is called “develop parameter” and “b” is called “grey input”. Now go through the following procedures:

1. Take AGO on  $u^{(0)}$ :

$$u^{(1)}(k) = AGO(u^{(0)}(k)) = \sum_{i=1}^k u^{(0)}(i)$$

2. Find  $Z^{(1)}(k)$

$$Z^{(1)}(k) = 0.5[u^{(1)}(k) + u^{(1)}(k-1)]$$

3. Using Least Squares Method, find matrix B and vector

$y_n$ :

$$B = \begin{bmatrix} -Z^{(1)}(2) & 1 \\ -Z^{(1)}(3) & 1 \\ \vdots & \vdots \\ -Z^{(1)}(n) & 1 \end{bmatrix}$$

$$y_n = [u^{(0)}(2), u^{(0)}(3), u^{(0)}(4), \dots, u^{(0)}(n)]$$

4. Estimate the parameters a and b by the following set of equations:

$$[a, b]^T = (B^T B)^{-1} B^T y_n$$

5. Find the response equation:

$$u^{(1)}(k+1) = [u^{(0)}(k) - \frac{b}{a}]e^{-ak} + \frac{b}{a}$$

6. The predicted value of  $\hat{u}^{(0)}(k+1)$  is

$$\hat{u}^{(0)}(k+1) = (1 - e^a)[u^{(0)}(1) - \frac{b}{a}]e^{-ak}$$

### III. GREY HANDOFF ALGORITHM

Fig. 1a depicts a traditional handoff algorithm based on averaging interval and relative signal strength with threshold and hysteresis margin. As it is shown in the figure, the Received Signal Strength (RSS) is averaged and compared with a threshold. If current RSS (RSSc) is greater than the threshold, handoff is initiated and the best BS is selected. If the RSS of the candidate BS is greater than that of the current BS plus hysteresis, user hands over to the candidate BS.

Fig. 1b shows handoff algorithm based on grey prediction. The handoff mechanism and decision making is the same as the one stated above; however, the algorithm benefits from Grey Prediction described in the previous section that replaces averaging in traditional handoff algorithms. This modification as will be further explained in the next section leads to considerable performance gain in terms of expected number of handoffs and handoff delay (two contradictory parameters in traditional handoff algorithms based on averaging).

### IV. SIMULATION RESULTS

Here we assume that two base stations A and B are separated by D meters, and the mobile terminal (MT) is moving from A to B in a straight line (Line Of Sight scenario). The velocity of MT is constant and the received signal strengths from both stations are sampled at the constant interval of  $d_s$  meter. The signal strengths can be calculated by the following formulae:

$$RSS\_A(k) = Pt - 10n \log(kd_s) + u(kd_s)$$

$$RSS\_B(k) = Pt - 10n \log(D - kd_s) + v(kd_s)$$

where the signal strengths (RSS\_A and RSS\_B) consist of transmitter power (Pt), path loss and shadow fading terms (u and v). The shadow fading terms are lognormal fading processes which are generated with a zero mean white Gaussian process passed through a single-pole autoregressive filter [10]. The autocorrelation of the filter's impulse response is set to be

$$R_s(d) = \sigma_s^2 \exp\left(-\frac{d}{d_0}\right)$$

where  $\sigma_s^2$  is the standard deviation of the white Gaussian process,  $d_0$  is the correlation distance, and d is the distance from either BS<sub>A</sub> or BS<sub>B</sub>. The simulation parameters are summarized in Table 1.

There are several performance metrics to evaluate a particular handoff algorithm. These metrics are: call blocking probability, handoff blocking probability, handoff probability, call dropping probability, number of handoffs, and handoff delay. Here we use call dropping probability, number of handoffs, and handoff delay to evaluate and compare the performance of Grey prediction based handoff algorithm with that of traditional handoff algorithm based on averaging interval.

In a particular handoff algorithm, it is desirable to reduce number of handoffs and handoff delay (in order to reduce

Table 1. Simulation Parameters

	Model
No. of Base Station	2
Distance between the stations	2000 meters
Sampling Distance (ds)	1 meter
Standard Deviation	6dB
Transmitter Power (Pt)	1 watt
n	4
$d_0$	20 meters
Averaging Interval	20 samples
Threshold	-105 dB

network's load and call dropping probability, respectively) simultaneously. However, as it is shown in figures 2, and 3, in a traditional handoff algorithm based on averaging (with hysteresis and threshold) satisfying both requirements seems rather impossible. Fig. 2 shows that with a fix hysteresis level (=14 dB), increasing the averaging interval leads to both mean number of handoff reduction and increase in call dropping probability(Call dropping probability is the probability of  $RSS_c$  to be lower than threshold value by 10dB). Furthermore, Fig. 3 shows the handoff delay of the traditional handoff algorithm by mean number of handoffs versus crossover point as hysteresis level changes from 0 to 22dB(Crossover point is the distance from  $BS_A$  where the probability of assignment to  $BS_A$  becomes 0.5). As it is obvious from the figure, mean number of handoff of 1 is only achieved for crossover point 1230m, i.e. a delay of approximately 230m is imposed on the system. On the other hand, by using Grey prediction based handoff algorithm, mean number of handoffs equal to 2 can be achieved without any delay (in the middle point of the 2 BS) by slight increase in hysteresis level, and 1 number of handoff is achieved in crossover point 1030m (i.e.30 meters delay).

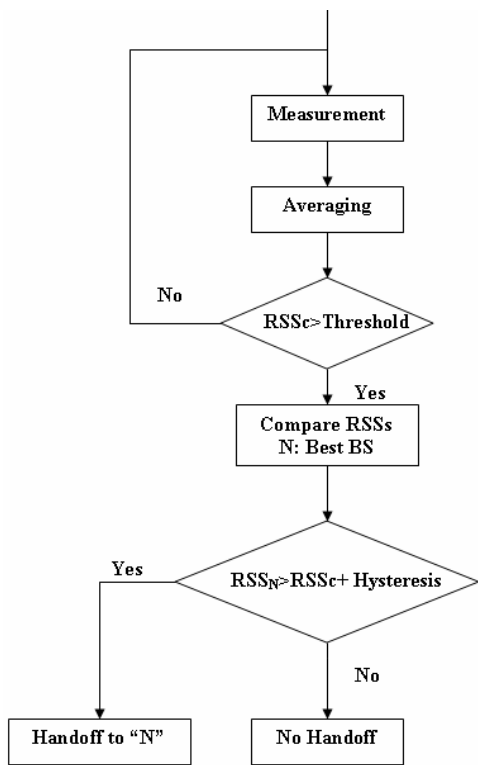


Fig. 1a. Handoff based on Averaging

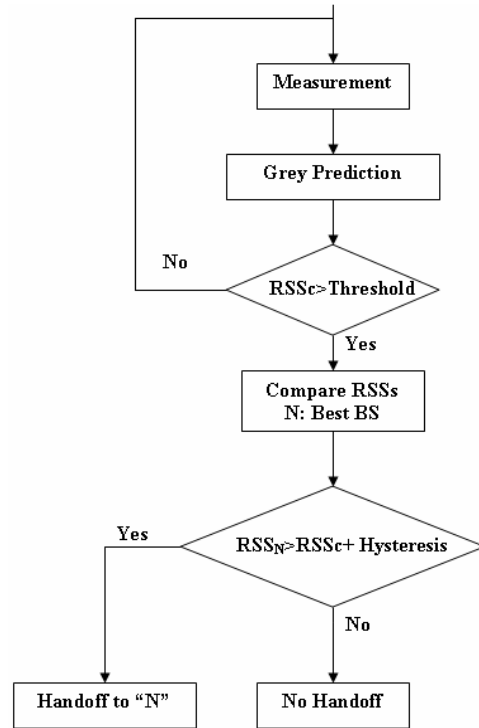


Fig. 1b. Grey Prediction Based Handoff

## V. CONCLUSION

As the cell size decreases for achieving higher capacity in a cellular network, devising suitable handoff algorithms to reduce both mean number of handoff and handoff delay is motivated. However, minimizing both of these parameters, by means of traditional handoff algorithms based on averaging interval, simultaneously seems impossible. Here we showed that applying powerful grey prediction technique proposed in the literature helps to minimize both the mean number of handoffs and handoff delay. This fact causes the communication society to pay special attention to grey prediction theory for the application of handoff algorithm in fourth generation mobile systems.

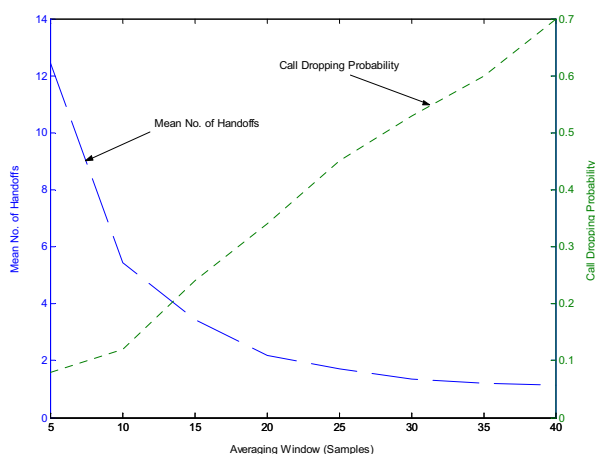


Fig. 2. Mean number of handoffs and call dropping probability versus averaging window size in traditional handoff algorithms.

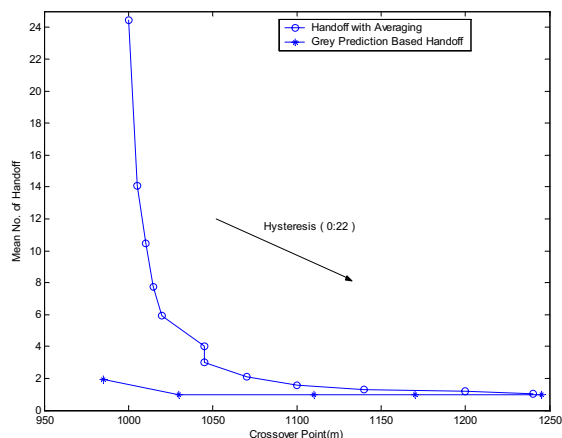


Fig. 3. Mean number of handoffs versus crossover point as hysteresis level changes from 0 to 22 dB.

#### REFERENCES

- [1] Eva Gustafsson, and Annika Jonsson, "Always Best Connected," IEEE Wireless Communications, February 2003, pp. 49-55.
- [2] Aurelian Bria, Fredrik Gessler, Olav Queseth, Richard Stridh, Matthias Unbehaun, Jiang Wu, Jenez Zander, and Maxime Flament, "4<sup>th</sup>-Generation Wireless Infrastructures: Scenarios and Research Challenges," IEEE Personal Communications, December 2001, pp. 25-31.
- [3] Gregory P. Pollini, "Trends in Handover Design," IEEE Communication Magazine, March 1996, pp. 82-90.
- [4] N. Zhang, Jack M. Holtzman, "Analysis of Handoff Algorithms Using Both Absolute and Relative Measurements," IEEE Trans. Vehicular Tech., vol. 45, no. 1, pp. 174-179, February 1996.
- [5] Shian-Tsong Sheu, and Chin-Chiang Wu, "Using Grey prediction theory to reduce handoff overhead in cellular communication systems", The 11<sup>th</sup> IEEE International Symposium on Personal, Indoor and Mobile Radio Communications, (PIMRC 2000), vol. 2, pp. 782-786, 2000.
- [6] G. Edwards and R. Sankar, "Handoff Using Fuzzy Logic," IEEE Globecom, 1995, pp. 38-44.

- [7] K. Palvan, P. Krishnamurthy, A. Hatami, M. Ylianttila, J. P. Makela, R. Pichna, and J. Vallstrom, "Handoff in Hybrid Mobile Data Networks", IEEE Personal Communications, pp. 34-47, April 2000.
- [8] R. Narasimhan, and D. C. Cox, "A Handoff Algorithm for Wireless Systems Using Pattern Recognition", Proceedings of the IEEE International Symposium on the Personal Indoor, Mobile Radio Communications, Boston, PIMRC' 98, September 1998.
- [9] J.L. Deng, "Introduction to grey system theory," The Journal of Grey Systems, vol. 1, no. 1, pp. 1-24, 1989.
- [10] M. Gudmundson, "Analysis of Handover Algorithms," Proc. Vehicular Tech. Conf. '91, St. Louis, MO, 1991, pp. 537-542.