

Plate-Laminated Slotted-Waveguide Fed 2×3 Planar Inverted F Antenna Array

Badar Muneer, Waseem Shabir, Faisal Karim Shaikh

Abstract—Substrate Integrated waveguide based 6-element array of Planar Inverted F antenna (PIFA) has been presented and analyzed parametrically in this paper. The antenna is fed with coupled transverse slots on a plate laminated waveguide cavity to ensure wide bandwidth and simplicity of feeding network. The two-layer structure has one layer dedicated for feeding network and the top layer dedicated for radiating elements. It has been demonstrated that the presented feeding technique for feeding such class of array antennas can be far simple in structure and miniaturized in size when it comes to designing large phased array antenna systems. A good return loss and standing wave ratio of 2:1 has been achieved while maintaining properties of typical PIFA.

Keywords—Feeding network, laminated waveguide, PIFA, transverse slots.

I. INTRODUCTION

THE increased demand of compact and high bandwidth antennas since last decade has forced researchers to move towards higher band of frequencies. In this regard, PIFA can be considered as a good candidate at lower microwave frequencies due to its reduced size, low profile and higher radiating efficiency. However, at higher microwave band of frequencies radiating efficiency of PIFA is degraded due to feeding pin used to excite PIFA and feeding pin also requires to be soldered with antenna radiating plate [1] leading to structural deformities and excess losses.

In past few years, various feeding techniques have been proposed and analyzed to increase the radiating efficiency of PIFA. In order to obtain wider bandwidth PIFA has been fed by an open-ended coplanar waveguide [2]. An aperture coupled PIFA excited through micro-strip transmission line has been proposed by [3]. A multilayer folded feeding structure have been proposed [11] and an edge feeding technique have been proposed by [12]. Multiple antenna designers have used capacitive plate to feed radiating plate and achieve higher impedance bandwidth [4]-[6].

In this paper, a feeding technique has been presented based on the idea of feeding the radiating elements via transverse slots in a waveguide cavity published in [8]-[10]. As a result, a 6-element PIFA with conformal feeding network has been designed and analyzed in this paper to demonstrate their use in design of complex and large phased array radars and multi-

element beam forming antenna systems. Owing to the low leakage and absorption losses of Substrate Integrated Waveguides (SIW) at higher frequencies, the layer-1 consists of SIW cavity backed transverse slots for feeding the 6-element PIFA array at layer-2. The layer-2 consists of radiating patches and shortening plate to connect the patch to ground. High Frequency Structural Simulator (HFSS) has been used as simulating tool that uses Finite Element Method (FEM) as numerical technique.

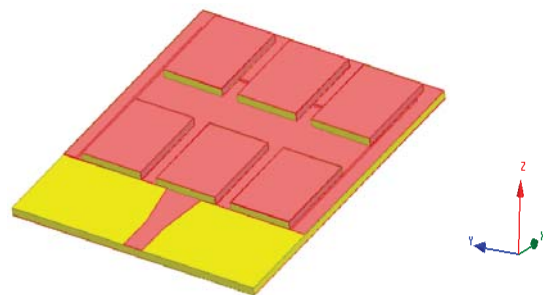


Fig. 1 3-D View of 2×3 array

II. ANTENNA PHYSICAL CONFIGURATION

Three-dimensional view of proposed design is given in Fig. 1. Design consists of two layers which are discussed separately. Substrate material used for both layers is FR-4 epoxy with relative permittivity of $\epsilon_r = 4.4$, dielectric loss tangent of 0.02 and thickness of 1.60 mm. Each PIFA element is composed of a radiating patch and a shortening plate that connects radiating patch and upper copper surface of layer-1. The upper copper surface of layer-1 acts as ground plane for radiating elements on layer-2.

A. Layer-1

The top view of layer-1 is given in Fig. 2. A cavity using the SIW structure at Layer-1 has been formed, the six transverse slots present at a calculated displacement act as power coupling structure to PIFA elements on top layer. Positions and dimensions of slots are optimized using HFSS simulator. The dimensions of Layer-1 are given in Table I. The transition between laminated waveguide and microstrip transmission line is designed by using (1) as given in [7].

B. M. is with the Department of Telecommunication Engineering, Mehran University of Engineering and Technology, Jamshoro (e-mail: badar.muneer@faculty.muett.edu.pk).

W. S and F.K Shaikh are with the Department of Telecommunication Engineering, Mehran University of Engineering and Technology, Jamshoro (e-mail: waseemshabir603@gmail.com).

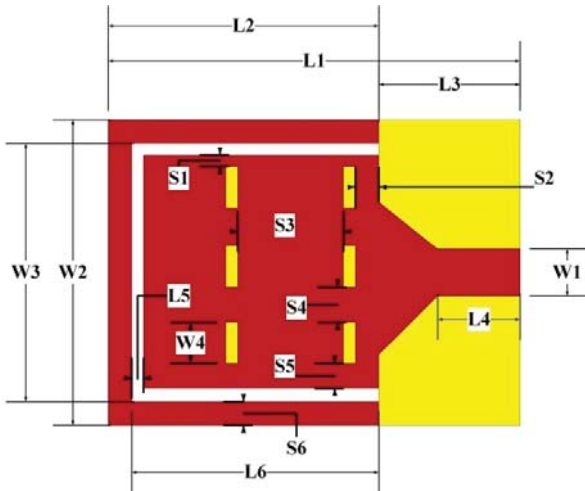


Fig. 2 Top View of Layer-1

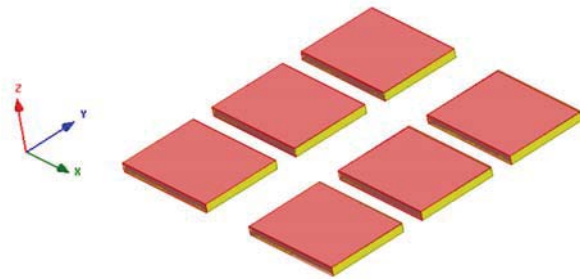


Fig. 3 Single element PIFA short circuited from one end

$$\frac{a_e}{w_e} = (4.38)e^{-0.627(\epsilon_r/\epsilon_e)} \quad (1)$$

TABLE I
 DIMENSIONS OF TWO-LAYER ANTENNA STRUCTURE (MM)

L ₁	72	S ₁	0.5	W ₁	4.8
L ₂	52.5	S ₂	3.5	W ₂	62
L ₃	19.5	S ₃	29	W ₃	54.5
L ₄	8.5	S ₄	5	W ₄	14
L ₅	0.5	S ₅	2		
L ₆	37	S ₆	3		

B. Layer-2

The layer-2 is composed of six PIFA elements along with shunting plates, the dimensions and spacing of elements is shown in the 3D diagram given in Fig. 3. Radiating patch has dimensions of 20x15 mm² and length of shunting plate is kept 20 mm. Separation between each PIFA element along x-axis and y-axis is 33.5% λ and 12.9% λ respectively.

III. OPERATION PRINCIPAL

Energy enters the antenna through the 50Ω port at layer-1 and a microstrip transmission line section. The tapered waveguide to microstrip line transition has been used to transport the maximum power to the laminated waveguide cavity section. Six transverse slots are specifically designed and positioned to couple maximum amount of power to the top layer, thanks to

the transverse slot coupling technique explained in detail in [8]-[10]. The energy is efficiently coupled to the top layer as can be seen in the fields and surface current simulation on the antenna surface shown in Figs. 4 and 5. Positions and dimensions of slots are optimized to couple maximum amount of power to upper layer. These coupled slots serve as the feed point to the planar F antennas on the top layer, the displacement between slot and the shunting plate used to short circuit the antenna to the ground plane can be used to match the impedance of antenna to the slot, this distance is altered to obtain the optimum power coupling and maximum radiation efficiency using HFSS parametric tools.

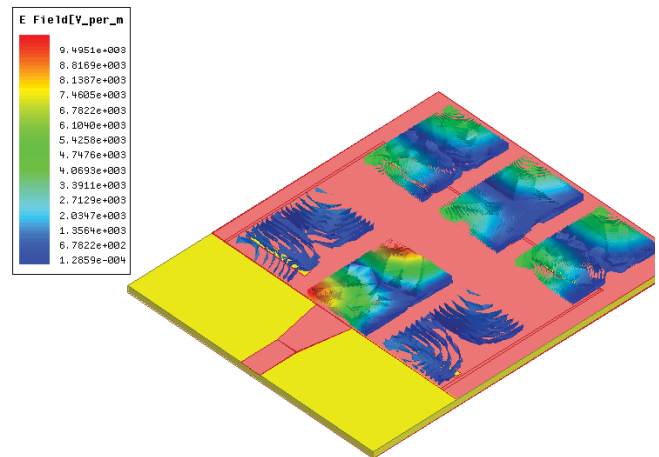


Fig. 4 E-Field magnitude simulated on Layer-1

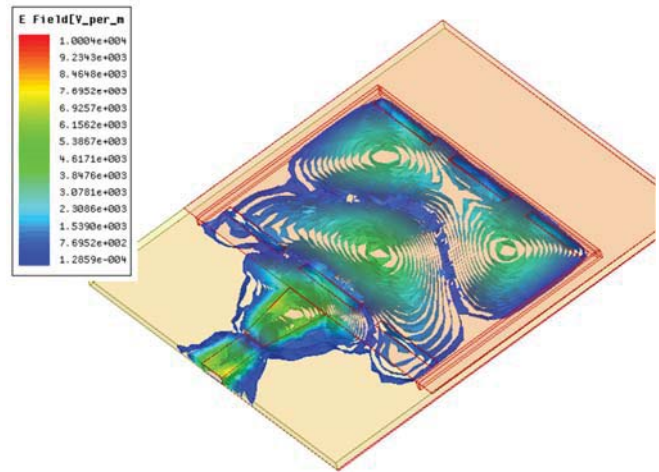


Fig. 5 E-Field magnitude pattern on Layer-2

IV. RESULTS AND DISCUSSION

Impedance matching between 50 Ω lumped port and radiating elements is controlled by changing the position of slot along x-axis. A good return loss of 40 dB is achieved by optimizing slot position while maintaining properties of conventional PIFA antenna as shown in Fig. 6 (a). Fig. 6 (b) gives the parametric analysis of changing the length of integrated waveguide cavity (L₂ dimension in Fig. 2). It has been analyzed from Fig. 6 (b) that the return loss improves as

cavity dimension along x-axis is increasing. The optimum return loss performance is achieved when the cavity length is set to 58 mm. The optimized 2D radiation pattern plots in all three planes are shown in Fig. 7. It can be seen from Fig. 7 that a radiation pattern of six element arrays in its natural form is achieved with approximately 30° of half power beam width.

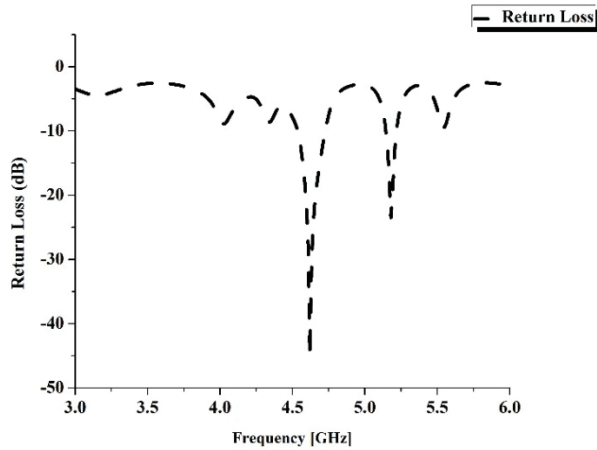


Fig. 6 (a) Return Loss at operating frequency

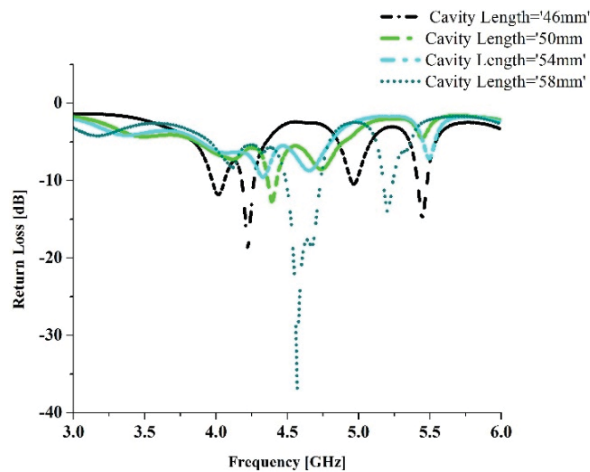


Fig. 6 (b) Effect of changing cavity dimensions along x-axis

The waveguide cavity-backed transverse slot coupled feeding technique is promising to reduce the complexities involved in designing feeding networks for large phased array and beamforming systems where it sometimes even becomes impossible or infeasible to develop such systems with traditional feeding techniques. This has been demonstrated that this technique may be suitable for applications where large antenna gains are expected (that involves a lot of array elements) without the added space, complexity and cost, whereas maintaining the optimum performance and efficiency of array networks. On the other hand, the loss inserted by the power dividing network for such large arrays make the design impractical in modern day in demanding applications. Increasing the number of elements by any number does not introduce any significant loss in the system, this makes it possible to design loss-loss, miniaturized and simple array

networks. As proposed in [8], it is also possible to control the phase of these transverse slots by means of PIN diodes. This leads to the possibility of an extremely simple design of high-gain electronically controllable phased array antenna without the need of designing power dividing and phase shifting networks separately, thus saving lots of hassles involved in realizing such systems.

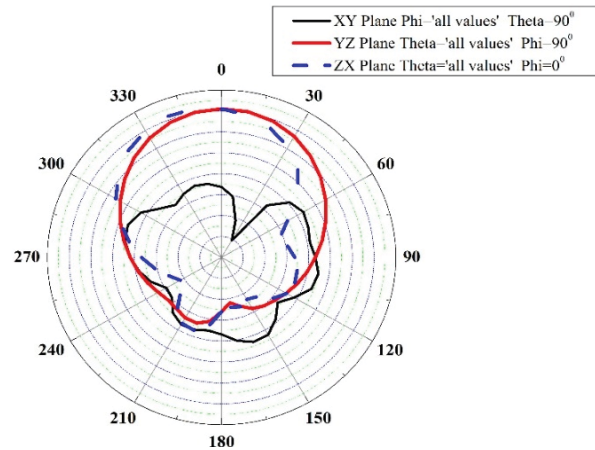


Fig. 7 Radiation pattern in three planes

V. CONCLUSION

A feeding technique has been presented and analyzed while maintaining properties of conventional PIFA. The presented design offers advantages of being easy to design, low losses and most importantly reduced complexity. Especially when it comes to designing a feeding network for large antenna arrays the proposed feeding using transverse slot coupling offers optimum performance without surplus complexity in the design.

ACKNOWLEDGMENT

This work is supported by the Higher Education Commission of Pakistan (HEC) under the grant SRGP# 772 and National Research Program for Universities (NRP). The authors also acknowledge Mehran University and Space & Upper Atmosphere Research Commission for providing the necessary help and support.

REFERENCES

- [1] K. Kagoshima, K. Tsunekawa and A. Ando, "Analysis of a planar inverted F antenna fed by electromagnetic coupling," *IEEE Antennas and Propagation Society International Symposium*, Chicago, IL, USA, 1992, pp. 1702-1705.
- [2] Sheng-Ming Deng, Ching-Long Tsai, Sheng-Far Chang and Sheau-Shong Bor, "A broadband CPW-fed planar inverted-F antenna," *2005 IEEE Antennas and Propagation Society International Symposium*, 2005, pp. 613-616.
- [3] K. M. Chan, E. Lee, T. Y. Lee, P. Gardner and T. Dodgson, "Aperture coupled, differentially fed planar inverted F antenna," *The First European Conference on Antennas and Propagation*, Nice, 2006, pp. 1-4.
- [4] H. T. Chattha, Y. Huang and Y. Lu, "PIFA Bandwidth Enhancement by Changing the Widths of Feed and Shorting Plates," in *IEEE Antennas and Wireless Propagation Letters*, vol. 8, 2009, pp. 637-640, 2009.
- [5] D. M. Nashaat, H. A. Elsadek and H. Ghali, "Single Feed Compact Quad-Band PIFA Antenna for Wireless Communication Applications," in *IEEE Transactions on Antennas and Propagation*, vol. 53, no. 8, pp. 2631-2635.

- [6] C. Suarez-Fajardo, J. O. Gomez-Sara and M. Ferrando-Bataller, "Broadband PIFA with capacitive feed," *IEEE Antennas and Propagation Society International Symposium*, Charleston, SC, 2009, pp. 1-4.
- [7] D. Deslandes, "Design equations for tapered microstrip-to-Substrate Integrated Waveguide transitions," *Microwave Symposium Digest (MTT), 2010 IEEE MTT-S International*, Anaheim, CA, 2010, pp. 704-707.
- [8] B. Muneer, Q. Zhu and S. Xu, "A Broadband Tunable Multilayer Substrate Integrated Waveguide Phase Shifter," *IEEE Microwave and Wireless Components Letters*, Vol 25 (4), Apr. 2015, pp. 220-222.
- [9] B. Muneer, Qi Zhu and Shanjia Xu Fellow, IEEE, "A Digital SIW Phase Shifter Implemented by Switching Transverse Slots via PIN Diodes," in *Frequenz, Journal of RF-Engineering and Telecommunications*, Vol 69 (9-10), Jan. 2015, pp. 383-387.
- [10] Badar Muneer and Qi Zhu, "A Novel Two-layer Electronically Controllable Substrate Integrated Waveguide Phase Shifter," *2015 German Microwave Conference (GeMic)*, Nurnberg, Germany, Mar. 2015, pp. 158-161.
- [11] B. N. Kim, S. O. Park, Y. S. Yoon, J. K. Oh, K. J. Lee and G. Y. Koo, "Hexaband Planar Inverted-F Antenna with Novel Feed Structure for Wireless Terminals," in *IEEE Antennas and Wireless Propagation Letters*, vol. 6, no. pp. 66-69, 2007.
- [12] A. Matsui, K. Fujimaki and H. Bingxuan, "Two types of planar inverted F antenna fed at the edge," *Proceedings of the 2012 IEEE International Symposium on Antennas and Propagation*, Chicago, IL, 2012, pp. 1-2.

B. Muneer (SM'10–M'15) was born in Mirpurkhas Pakistan in 1987. He received the B.S degree in communication systems engineering from Institute of Space Technology, Islamabad, Pakistan, in 2008, M.S Degree in Telecommunication Engineering from NED University of Engineering and Technology, Karachi, Pakistan, in 2012 and PhD degree in Electromagnetic Fields & Microwave Technology from University of Science & Technology of China, P.R China, in 2015.

From 2008 to 2011, he was with a satellite broadcasting company as a satellite engineer. He worked on VSAT, CATV and many modern broadcast equipment. Since 2015, he has been an Assistant Professor with Telecommunication Engineering Department, Mehran University of Engineering & Technology, Jamshoro. He is a reviewer for several renowned journals including IEEE Microwave and Wireless Component Letters. His current research interest are in the area of microwave and millimeter-wave technology, SIW based power dividers, phase shifters and SIW metamaterial based devices.

W. Shabir (SM'15) was born in Dadu Pakistan in 1995. Currently he is pursuing his B.E degree in Telecommunication Engineering from Mehran University of Engineering & Technology Jamshoro. His research interest are in the area of microwave and millimeter-wave technology, SIW based Antennas and Filters.